



PDGA  
EVENT

# SPRING SLING 2023



2 ROUNDS  
SAT 21 OCT  
ATHLLON PARK



HOSTED BY

PRESENTED BY



THE GREEN  
SHED

- [actdiscgolfclub.com](https://actdiscgolfclub.com)
- [act disc golf club](#)
- [actdiscgolfclub](#)

- [thegreenshed.net.au](https://thegreenshed.net.au)
- [thegreenshed.au](#)
- [the green shed cbr](#)

As a token of our appreciation for playing Spring Sling 2023, enjoy a 5% store discount! Visit [www.actdiscgolfclub.com/shop](https://www.actdiscgolfclub.com/shop), use code "sling23", choose local pickup, and mention "Spring Sling order" in the notes. Your discs will be ready for pickup at the event. Club members, you can stack this 5% voucher with your existing 10% discount!

# WITH THANKS TO OUR AFFILIATE SPONSORS



OUR DIGITAL PARTNER



AND A VERY SPECIAL THANKS

Phil Tweed  
Dan Frost

Tournament Director  
Caddy book

# COURSE OVERVIEW

Welcome to Athllon Park! We hope you enjoy the new course. Spring Sling 2023 will be played on a modified version of the permanent Blue layout. For reference:

<b>Weston Park White</b>	18 holes   Par 59   1,630m
<b>Athllon Park (Spring Sling)</b>	18 holes   Par 59   2,050m
<b>Eddison Park Blue</b>	18 holes   Par 62   2,068m
<b>Weston Park Gold back 18</b>	18 holes   Par 61   2,362m

## Using the course overview map

- ♣ Tee pads are blue, baskets are white, hole paths are solid white lines, walking paths between holes are dotted white lines. **Please refer to these walking paths as you navigate the course.**
- ♣ Player HQ, toilets and parking are also marked.
- ♣ Please note there are **no water stations** in the park, but water will be included in your players pack.

## Notes about OB

While it may seem there is a lot of OB when looking at the hole maps, most of it doesn't come into play.

- OB** Concreted/paved paths, roads, bodies of water and bollards (inside line of vertical posts).
- Not OB** Dirt/gravel/unsealed paths, except for the gravel path behind hole 8's teepad (unlikely to come into play).

- ♣ Where areas are referenced as OB, the reference applies to those areas **and beyond** (see hole maps).
- ♣ Some areas have spray-painted blue lines to mark OB, but they are unlikely to come into play.
- ♣ If in doubt after discussing with your cardmates (remember the benefit of the doubt goes to the player), take a picture, play it both ways, and see the TD after the round for a final decision.
- ♣ Take care when retrieving discs from roads, as they can be very busy.
- ♣ Casual relief areas are marked on holes 5 and 17.

## Members of the public

Athllon Park is a public area and disc golf will likely be unfamiliar to the locals.

- ♣ Members of the public have right of way. If there's a chance you'll hit someone, don't throw.
- ♣ Support your cardmates by spotting where needed, and politely ask members of the public to move/pay attention to shots if they're not passing through quickly.
- ♣ Take a few seconds to explain to people what we're up to and invite them to watch a few shots!

## Scoring

Two players on each card must score using PDGA <https://www.pdga.com/score>

[The password is "74546", which is the PDGA event ID]



# WHAT ELSE?

## WHAT'S THE PLAN?

### FRIDAY

10:00	Baskets progressively set up for practice
18:30	Non-secured baskets progressively packed away

### SATURDAY

09:00	Player check-in opens
09:30	Mandatory players meeting
10:00	Round 1 begins (mixed cards, shotgun start)
12:30	Lunch break (BYO)
14:00	Round 2 begins (division cards, shotgun start)
16:30	Presentations and pack-up

### SUNDAY

09:00	Club Day at Weston Park Golds (note the earlier 09:00 start) <a href="https://dgmtrx.com/2725874">https://dgmtrx.com/2725874</a>
-------	--

## WHAT'S ON OFFER?

Players packs will have Spring Sling merch, snacks, a sports drink, and a bottle of water.

Trophies, cash prizes (pros), and vouchers (amateurs) will be awarded to those who place well enough within their divisions.

There will also be CTP prizes (see hole maps).

## WHAT'S THE HASHTAG?

Tag any posts with [#ACTspringsling](https://www.facebook.com/ACTspringsling) on both Facebook and Instagram to get on our radar!

## QUESTIONS? ISSUES?

For help in the lead up to or during the event, contact Phil Tweed (Tournament Director) on 0490 812 196, or contact the club on Facebook or at [actdiscgolfclub@gmail.com](mailto:actdiscgolfclub@gmail.com)

## WHAT'S NEARBY?

### JENKE CCT CENTRE

IGA	Cafe
Hungry Jack's	Domino's
Petrol station	Chemist

### WANNIASSA SHOPPING CENTRE

Coles	Bakery
Cafe	Takeaway
Red Rooster	Chemist
Public toilet	Petrol station

### KAMBAH VILLAGE SHOPPING CENTRE

Woolworths	Bakery
Takeaway	Petrol station
Public toilet	

### PLATYPUS STORY TOILET BLOCK

## WHAT'S THE PARKING LIKE?

There are three free parking bays along Wheeler Cres (near player HQ). If these fill up, more free parking is available on Florence Taylor St. See course overview map for locations.

Alternatively, there is a large carpark near Hungry Jack's, which is a fairly short walk to HQ.

Please only park in designated parking areas.



ACT DISC GOLF CLUB



# SPRING SLING 2023

## HOLE 1

## PAR 3



## 116M



### DESCRIPTION

Straightforward par 3 if you can go the distance while keeping it in the middle. Watch out for rollaways on your upshots and putts as you'll have to deal with a basket perched on a small yet unforgiving mound.

OB

Paths left, right and behind tee pad.

**PROUDLY  
SUPPORTED  
BY:**

**THE GREEN  
SHED**



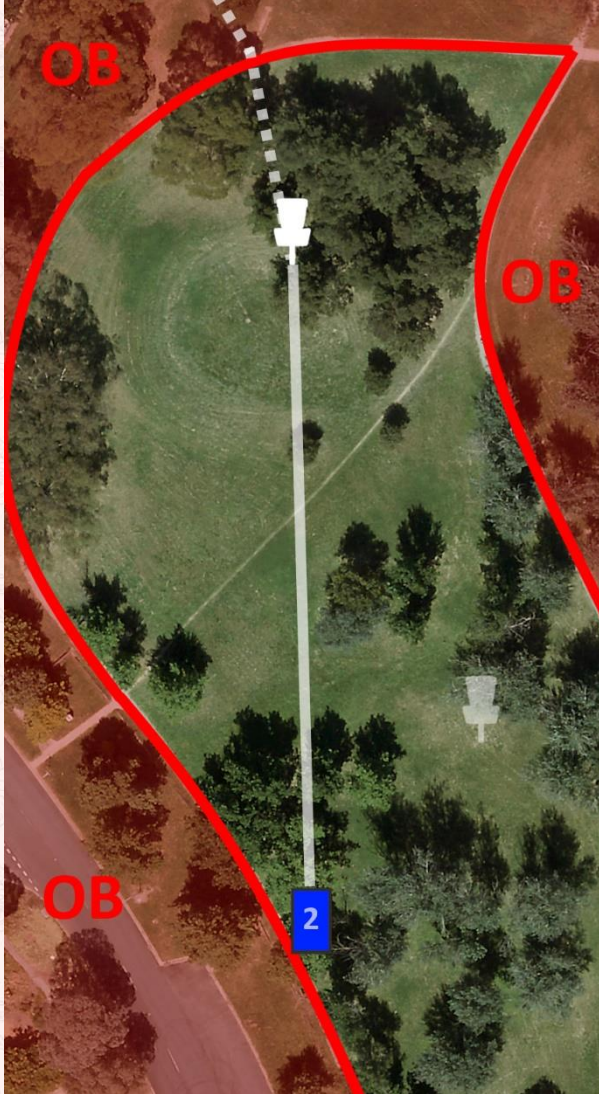
# SPRING SLING 2023

## HOLE 2

## PAR 3



## 84M



### DESCRIPTION

The basket is right there... how hard could it be? Make sure to clear the conveniently placed fairway tree to give yourself a putt. Watch out for rollaways though – the basket is perched precariously on the side of the hill. Backhand and forehand lines are both viable.

OB

Paths left, right and long.

NOTES

For directions to hole 3, refer to course overview map.

**PROUDLY  
SUPPORTED  
BY:**



**THE  
PROPERTY  
COLLECTIVE**





# SPRING SLING 2023

## HOLE 3

## PAR 3

## 98M



### DESCRIPTION

Height and distance control are key on this tricky par 3. Don't let your eyes deceive you – the basket is well past the guardian trees, but bite off too much and you'll find yourself OB long.

### OB

Paths right and long, road left (2m mandatory relief from road as there are no bollards).

### MANDO

Mando left of the marked tree. Drop zone next to tree.

### NOTES

**For directions to hole 4, refer to course overview map.**

# PROUDLY SUPPORTED BY:





# SPRING SLING 2023

## HOLE 4

## PAR 4

## 182M



### DESCRIPTION

Bombs away, but be careful not to leak too far left or right, or you'll have no look at the low-lying and well-protected peninsula green on your approach. A well-placed tee shot will land around the pine trees, but a birdie is not guaranteed from there. Beware the OB water when approaching the green.

### OB

Path right and behind tee pad (gravel path not OB), water left and long (the only OB really in play). Concrete drain areas are OB.

### NOTES

Make sure the green is clear before throwing approach shots. When you have finished the hole, try not to walk in the throwing path of the group behind.

**PROUDLY  
SUPPORTED  
BY:**

**THE GREEN  
SHED** 



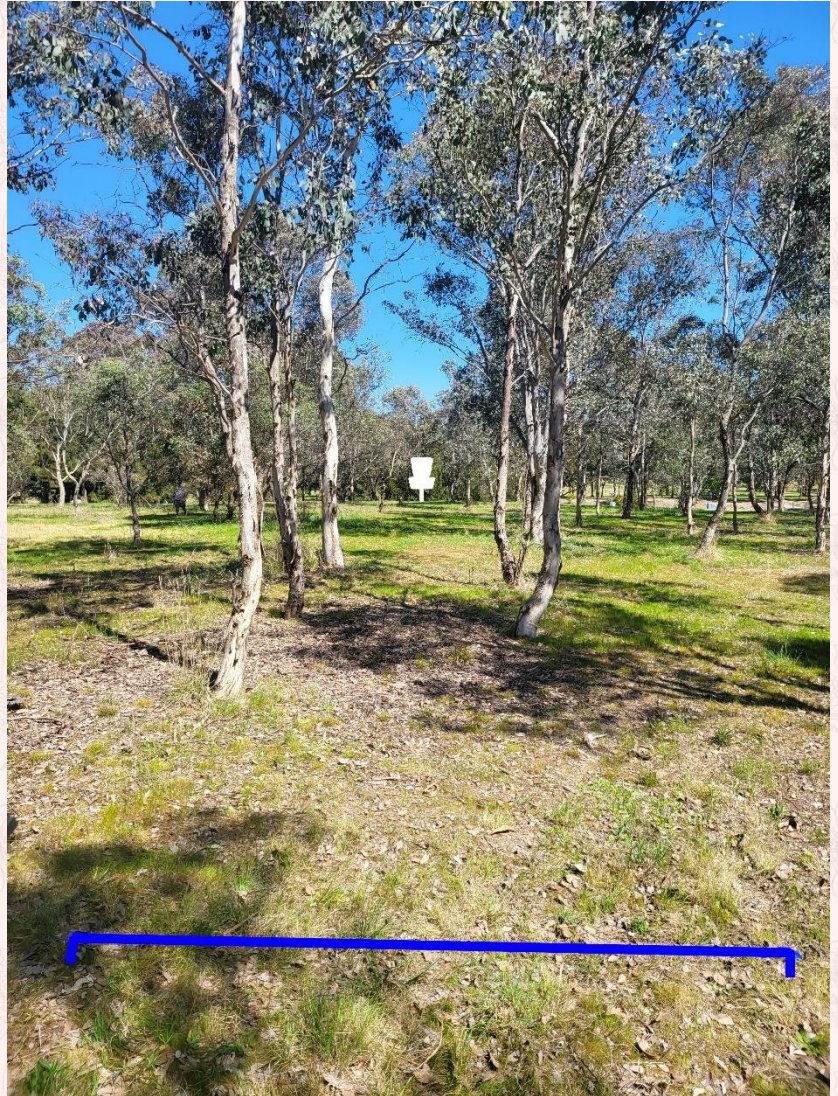


# SPRING SLING 2023

## HOLE 5

## PAR 3

## 75M



### DESCRIPTION

A short but treacherous par 3, with trees left and right, and a steep drop-off behind the basket down to the OB water.

### OB

Water long, Path right and behind tee pad (gravel path not OB). Concrete drain areas are OB.

### NOTES

Large hole marked as casual relief (take relief without penalty backwards along the line to the basket to the nearest playable lie). Take care when standing on the sloped part of the green.

**For directions to hole 6, refer to course overview map.**

**PROUDLY  
SUPPORTED  
BY:**



**THE  
PROPERTY   
COLLECTIVE**

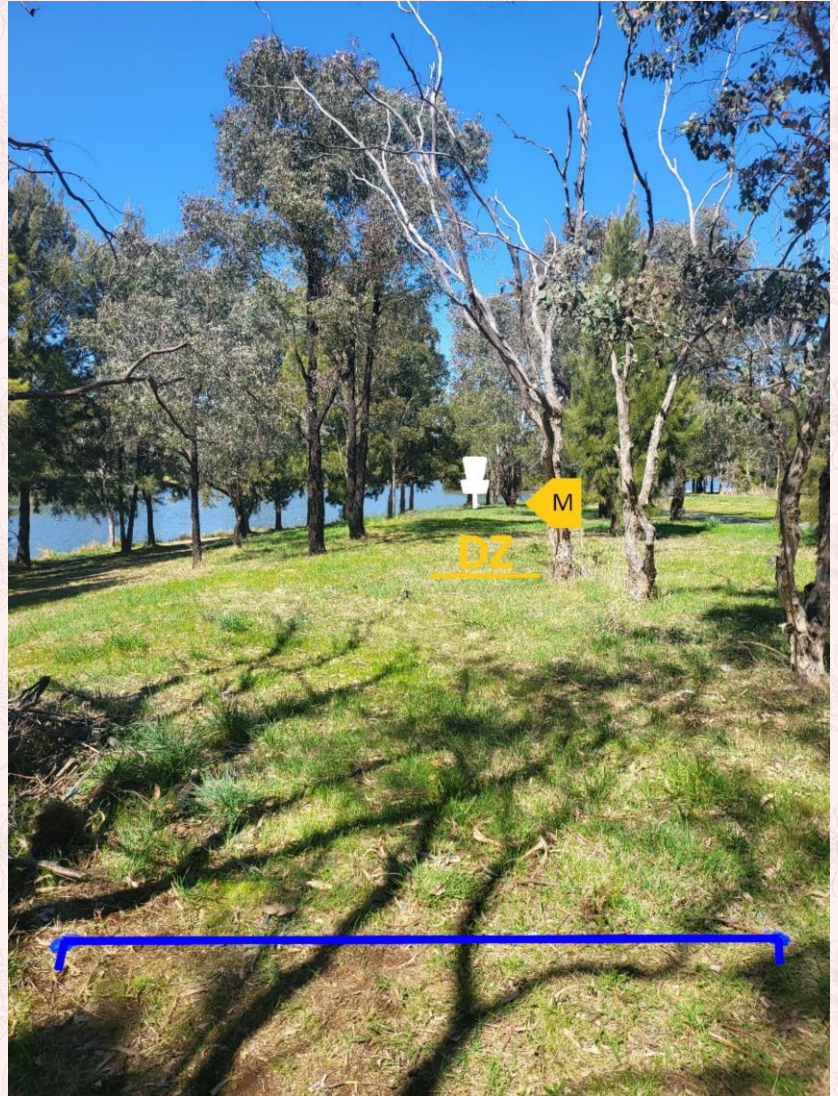
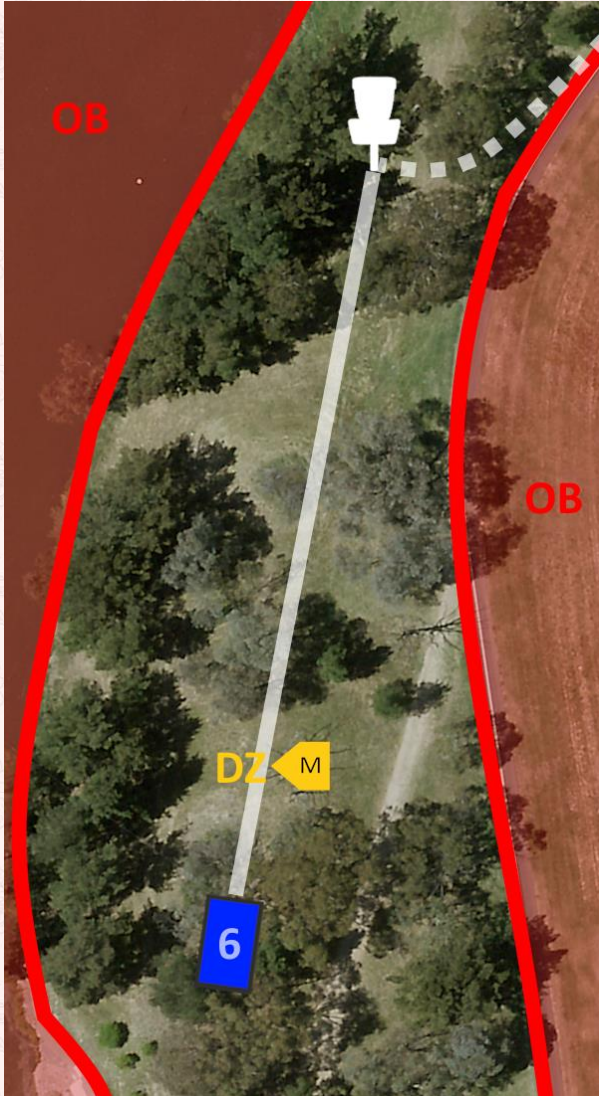


# SPRING SLING 2023

## HOLE 6

## PAR 3

## 67M



### DESCRIPTION

The shortest hole on the course, but don't drop your guard. The OB water on the left will claim would-be great RHBH tee shots that leak left at the end of the flight.

**OB** Water left, path right.

**MANDO** Mando left of the marked tree. Drop zone next to tree.

**NOTES** Watch for pedestrians on the path.

# PROUDLY SUPPORTED BY:



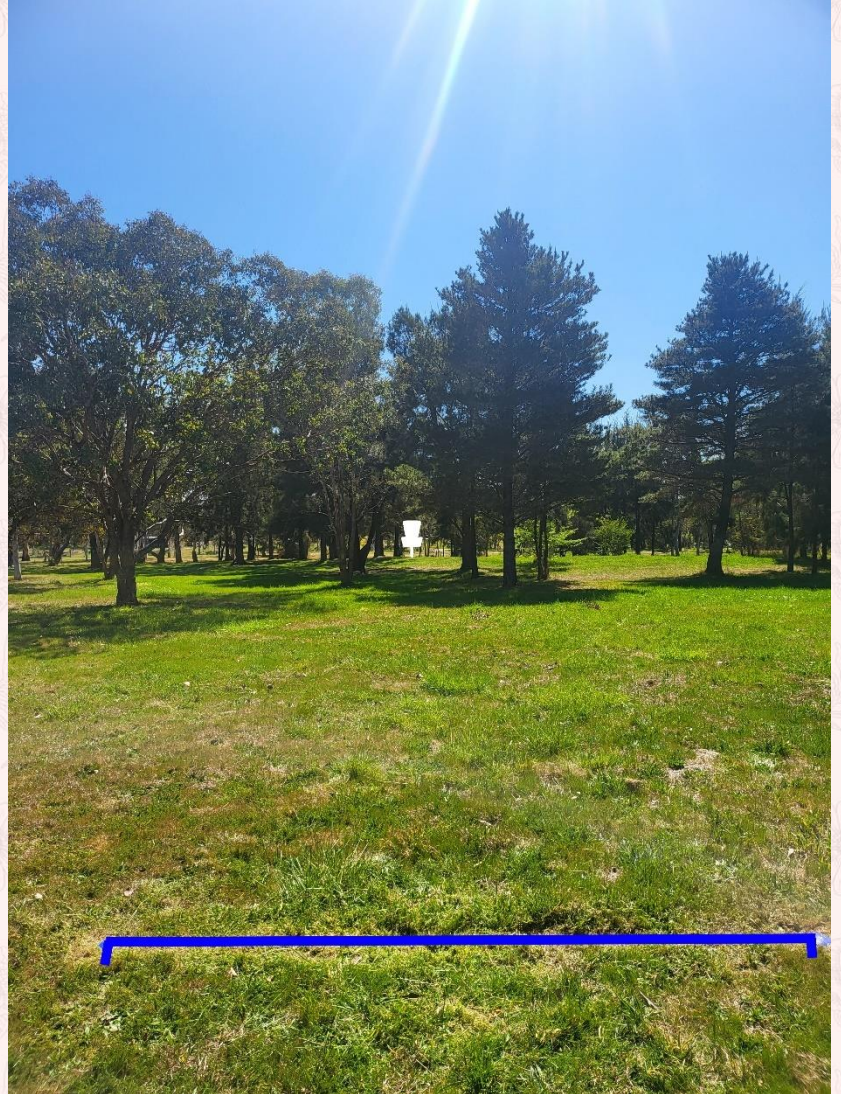


# SPRING SLING 2023

## HOLE 7

## PAR 3

## 96M



### DESCRIPTION

Take on the low ceiling tunnel shot or bomb something over the top and invariably drop 20m short? Either way a birdie will be very tough.

OB

Path behind/right of tee pad.

NOTES

On your way to hole 8, watch out for shots being thrown by players into hole 9's green (go around the back of the green).

**PROUDLY  
SUPPORTED  
BY:**

   
**JUSTICE**



# SPRING SLING 2023

## HOLE 8

## PAR 3

## 102M



### DESCRIPTION

RHBH players will find it hard to shape a shot accurately enough to get a look on this hole. The shape is a little more friendly for LHBH and RHFH players, but still requires a good amount of power and control to not leak OB right.

### OB

Gravel path behind/right of tee pad, bollards right and long.

### NOTES

On your way to hole 9, watch out for players throwing on hole 9 (wait for them to throw). Please don't approach the fences too closely unless you need to.

**PROUDLY  
SUPPORTED  
BY:**



**THE  
PROPERTY  
COLLECTIVE**



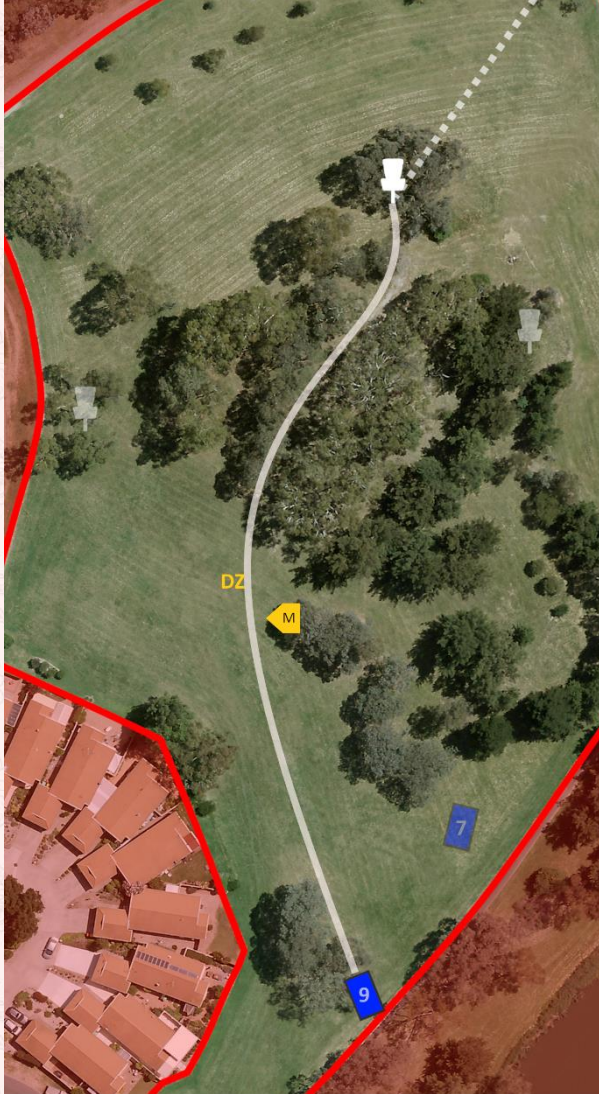


# SPRING SLING 2023

## HOLE 9

## PAR 4

## 172M



### DESCRIPTION

A tricky dogleg right par 4 with a mando on the corner tree. Placement is prioritised over distance off the tee. An ideal shot will land next to the mando at the base of the tunnel. Get too greedy and you might find yourself struggling.

**OB** Path behind/right of tee pad, house fences and bollards to the left.

**MANDO** Mando left of the marked tree. Drop zone is to the left of mando.

**NOTES** Please don't approach the fences too closely unless you need to.  
**For directions to hole 10, refer to course overview map.**

# PROUDLY SUPPORTED BY:



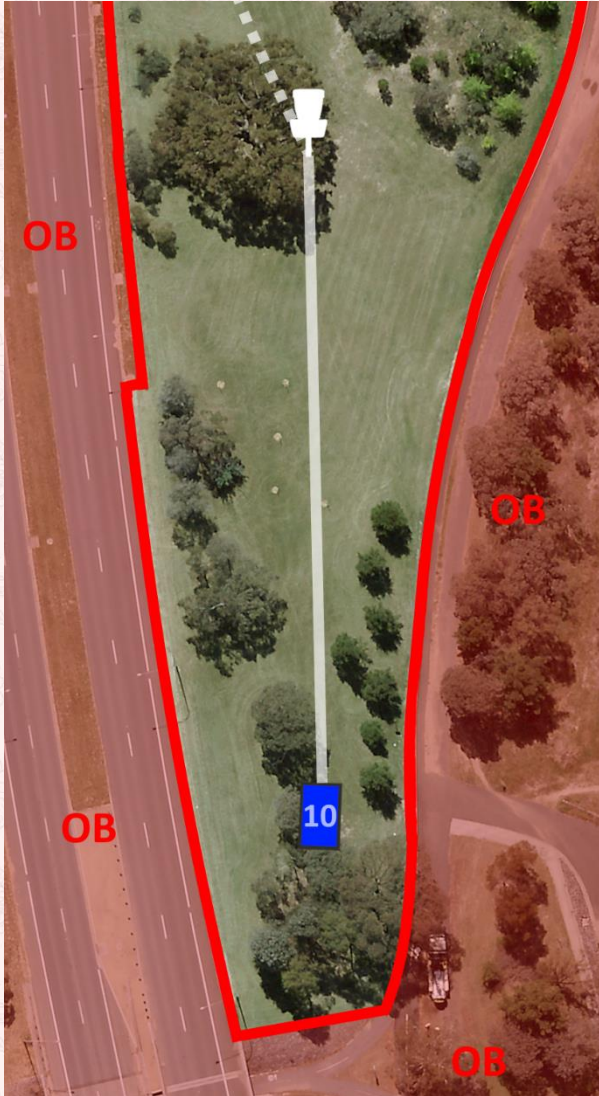


# SPRING SLING 2023

## HOLE 10

## PAR 3

## 83M



### DESCRIPTION

This is one you want to get, but beware the typical headwinds on this hole, which have a habit of turning drives over. If things go really badly, you might find yourself OB.

OB

Path right, bollards left (with a straight line connecting the last metal bollard and the first wooden bollard).

**PROUDLY  
SUPPORTED  
BY:**

**THE GREEN  
SHED** 

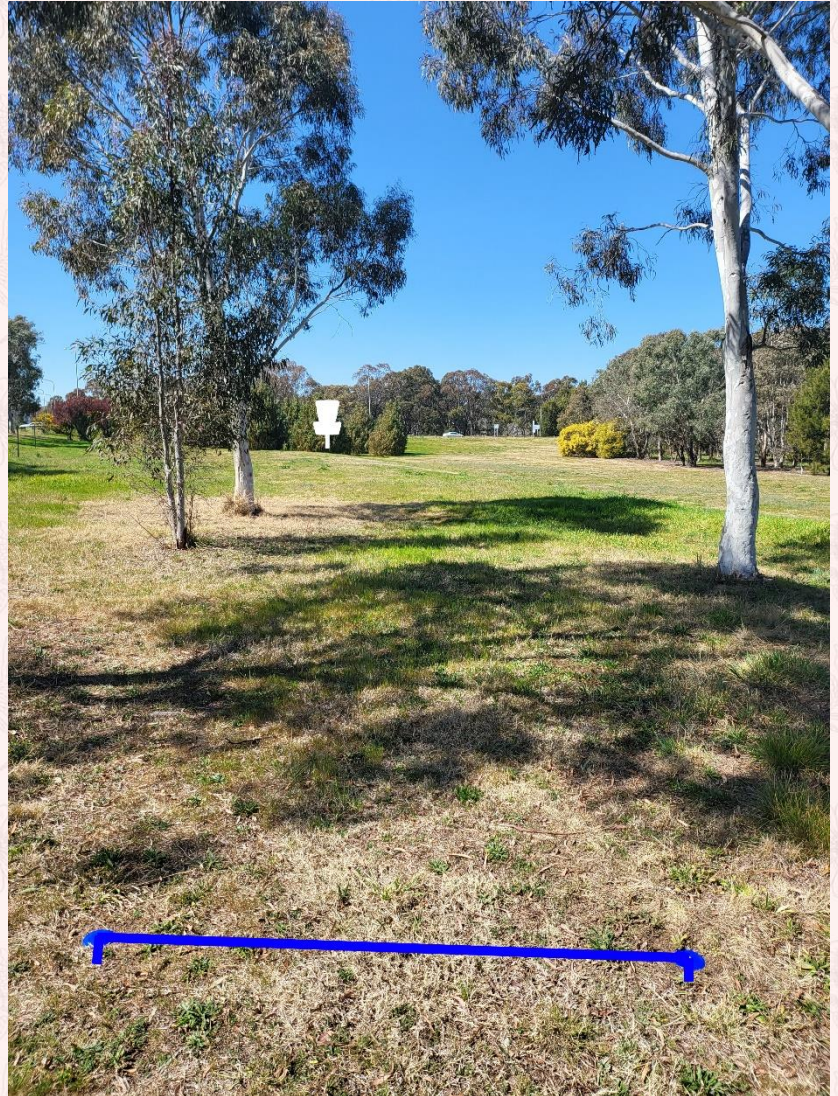
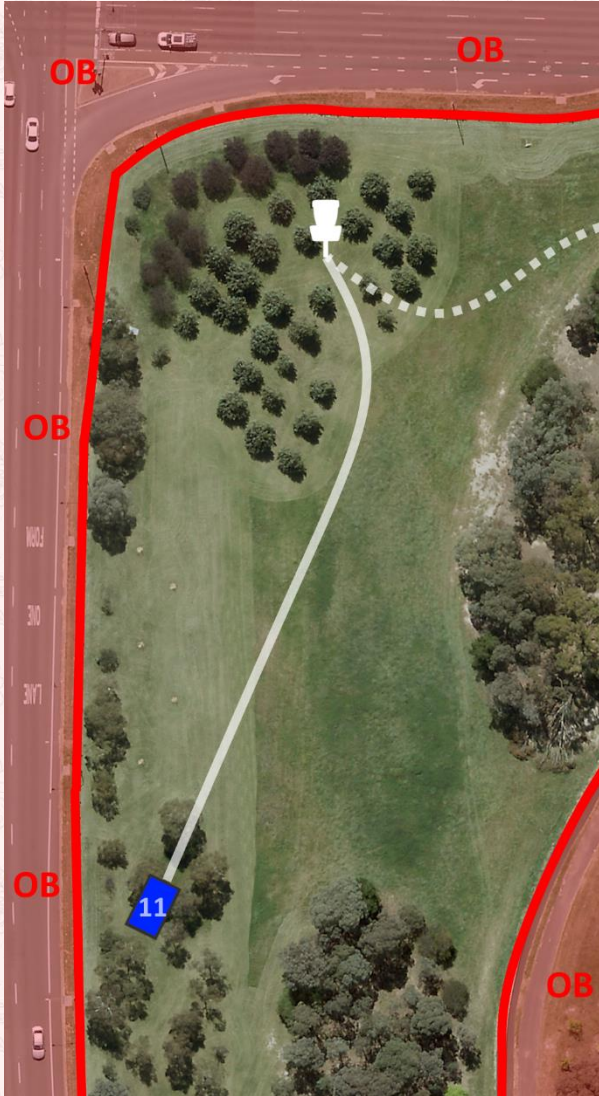


# SPRING SLING 2023

## HOLE 11

## PAR 3

## 107M



### DESCRIPTION

A blind tee shot into a well-protected basket amongst the trees. The common mistake is to not finish hard enough left at the end of the flight, but finish too hard and you won't have a look.

### OB

Bollards left and long, path right.

### NOTES

As this is a blind tee shot, make sure the green is clear before throwing.

**For directions to hole 12,** refer to course overview map. Don't mistakenly stop at hole 13!

# PROUDLY SUPPORTED BY:



ACT DISC GOLF CLUB

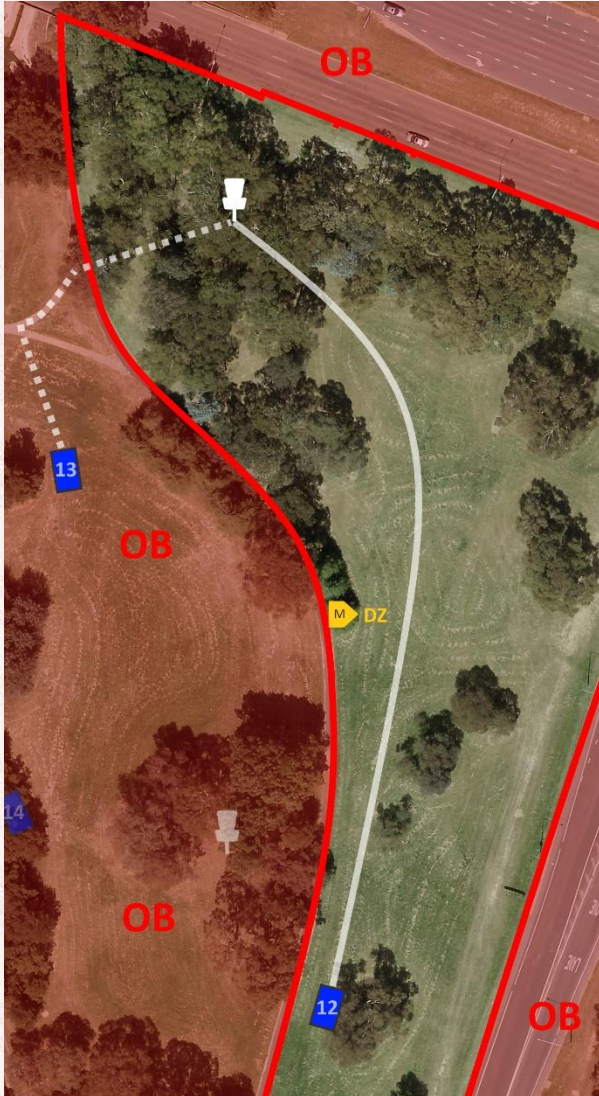


# SPRING SLING 2023

## HOLE 12

## PAR 4

## 181M



### DESCRIPTION

Bite off as much distance as you like off the tee, but don't miss the mando. There are countless options into the heavily protected basket, none of which feel like a sure thing.

### OB

Path left and long, road right (2m mandatory relief from road as there are no bollards).

### MANDO

Mando right of the marked tree. Drop zone next to tree.

### NOTES

Please make sure no one is on the path before throwing your tee shot.

# PROUDLY SUPPORTED BY:







# SPRING SLING 2023

## HOLE 13

## PAR 3



## 93M



### DESCRIPTION

Many lines can reach the basket on this hole – which one are you most confident with?

OB

Path left, stormwater drain right.

**PROUDLY  
SUPPORTED  
BY:**



**THE  
PROPERTY  
COLLECTIVE**





# SPRING SLING 2023

## HOLE 14

## PAR 3

## 89M



### DESCRIPTION

LHBH or RHFH are the best options for this sharply turning, low ceiling, blind tee shot. Be careful not to go too straight off the tee or you might end up OB. The OB drain is in play for upshots and long birdie putts.

### OB

Path left and long, stormwater drain right. Take care when retrieving discs from the stormwater drain.

### NOTES

As this is a blind tee shot, make sure the green is clear before throwing.

**PROUDLY  
SUPPORTED  
BY:**

**THE GREEN  
SHED**

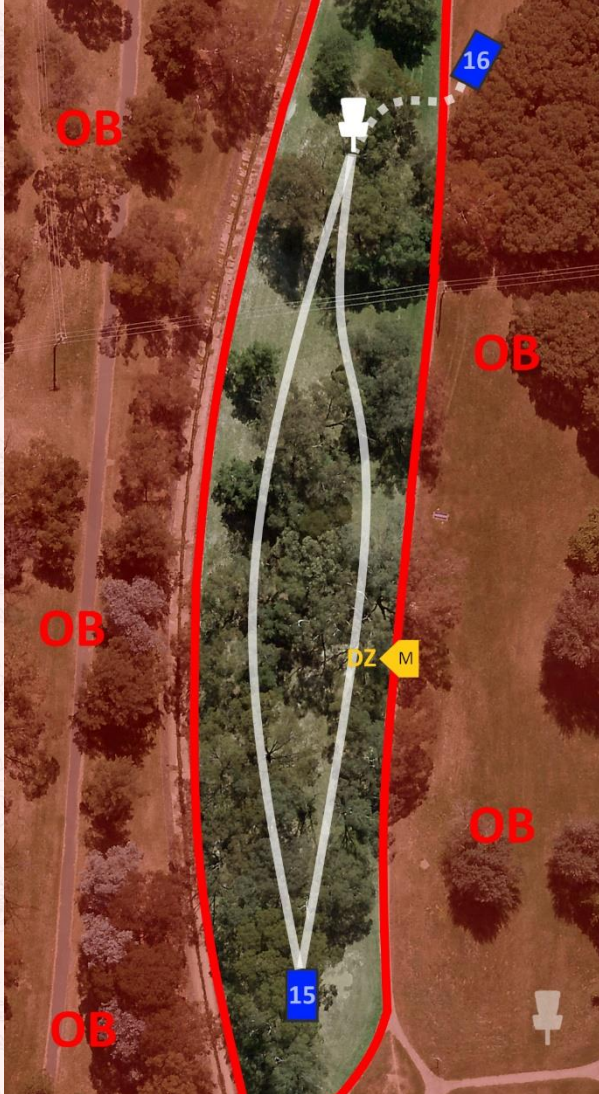


# SPRING SLING 2023

## HOLE 15

## PAR 4

## 139M



### DESCRIPTION

Control and landing zones are key on this short wooded par 4. Do you risk a wild redirect with a driver or play it safe with a putter? Find a line you like and commit to it – this hole will punish indecision.

### OB

Path right, stormwater drain left. Take care when retrieving discs from the stormwater drain.

### MANDO

Mando left of the marked tree. Drop zone next to tree.

### NOTES

Please make sure no one is on the path before throwing approach shots (especially if throwing along the path).

# PROUDLY SUPPORTED BY:



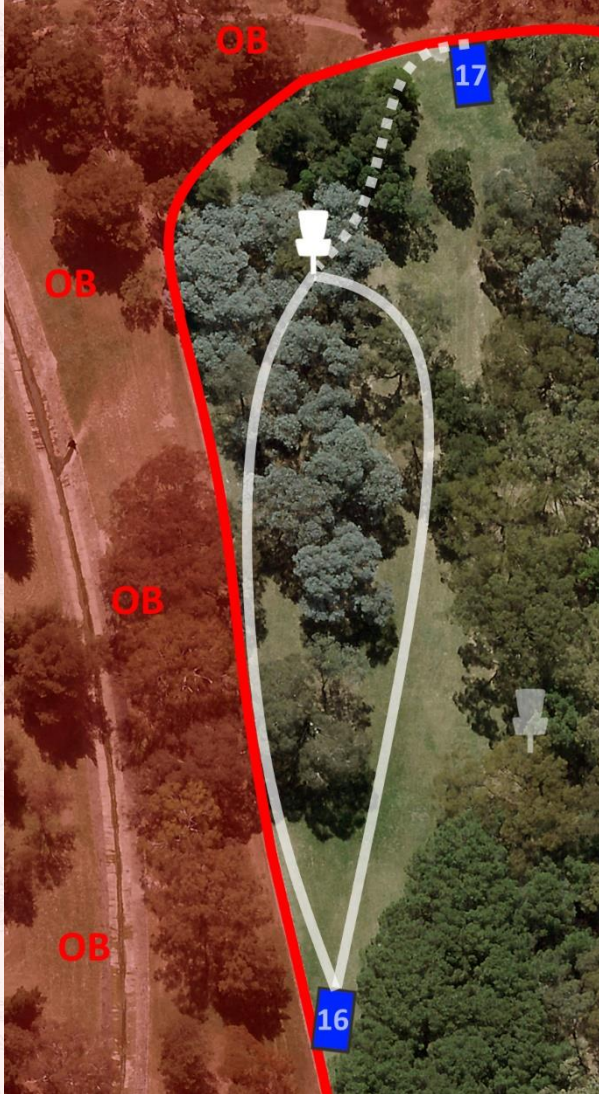


# SPRING SLING 2023

## HOLE 16

## PAR 3

## 103M



### DESCRIPTION

RHBH is the preferred play on this hole, but lefties may find themselves wondering if it's worth playing a big shot down the OB path and skipping late to the basket. Either way, get your protractor out, because your angle play will be tested.

**OB** Path left and long.

**NOTES** If throwing down the path, please make sure it is safe to do so first.

# PROUDLY SUPPORTED BY:



ACT DISC GOLF CLUB



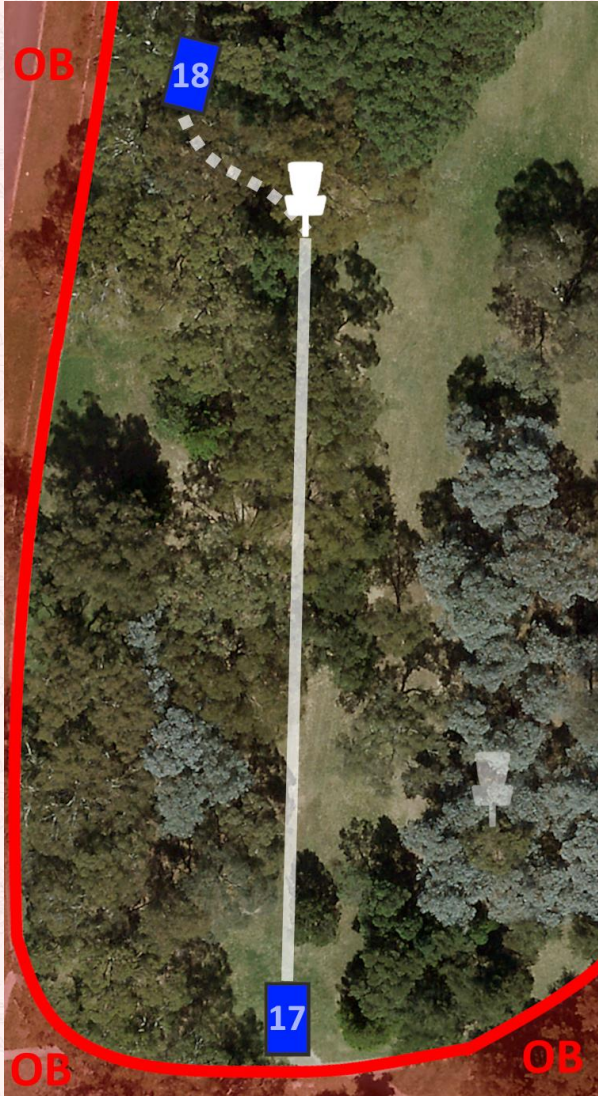
# SPRING SLING 2023

## HOLE 17

## PAR 3



## 90M



### DESCRIPTION

This par 3 looks straightforward, but it's anything but. The basket is further than it looks and the guardian trees love to bat down discs travelling on a good line. Redirects have been known to knock discs 20m off course, which can bring the OB left into play.

### OB

Paths left, right and behind tee pad.

### NOTES

There is a marked prickly tree on the left side of the fairway, about halfway to the hole. Optional casual relief can be taken if your disc lands in/at the base of this tree (take relief without penalty backwards along the line to the basket to the nearest playable lie).

**PROUDLY  
SUPPORTED  
BY:**



**THE  
PROPERTY  
COLLECTIVE**



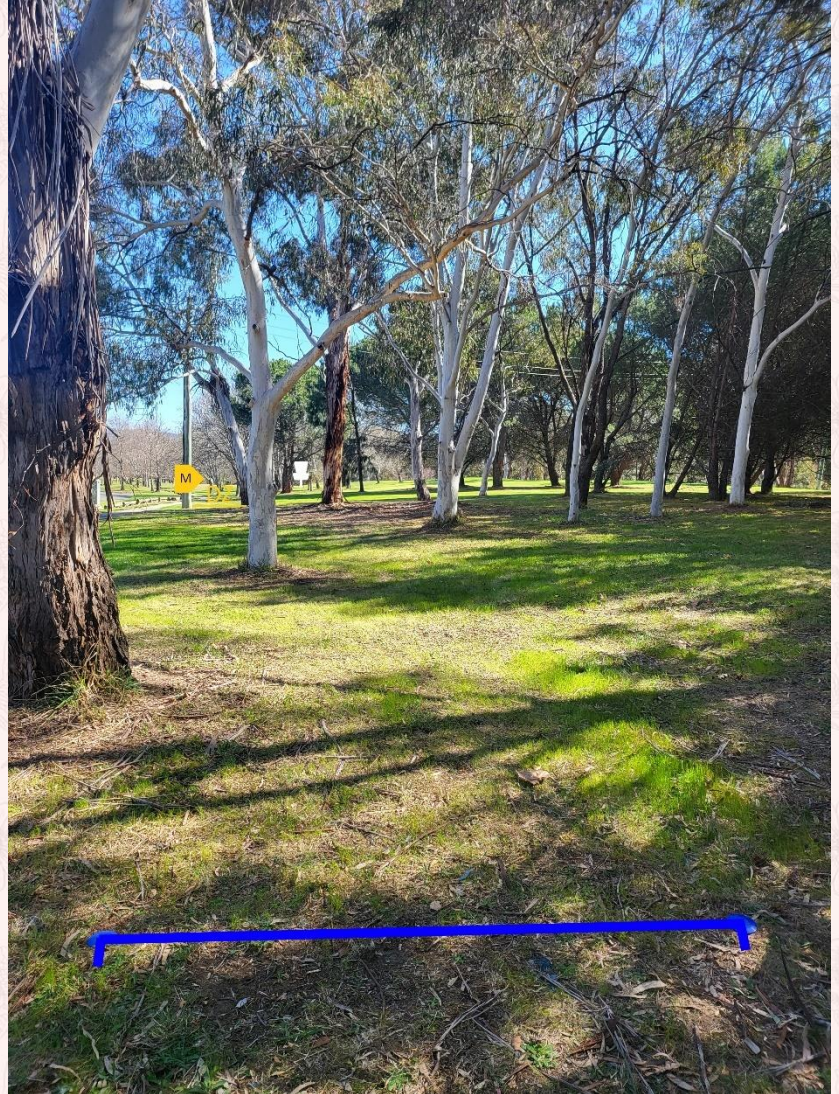


# SPRING SLING 2023

## HOLE 18

## PAR 4

## 173M



### DESCRIPTION

The last hole is a doozy. A birdie could be on if you can make it out of the forest, but any deflections or wayward releases could result in players scrambling for bogey. The OB long of the basket can deter players from running long putts, or turn a slightly long approach shot into a knee-knocker for par (or worse).

**OB** Paths left, right and long.

**MANDO** Mando right of the marked pole. Drop zone next to pole.

**PROUDLY  
SUPPORTED  
BY:**

**THE GREEN  
SHED** 